

Barnfields Primary School

Year 6



SCHOOL VISION:

At Barnfields, **academic excellence** runs alongside **sporting and artistic excellence**. The whole child is nurtured as **positive wellbeing** is encouraged and supported, enabling them to make **outstanding progress** across the curriculum.

This learning is underpinned by **strong values** that encourage and guide the children through the rest of their academic journey and as **citizens of the future**.



Meet the Teachers



Mrs Crosland-Nash
Class Teacher and UKS2
Phase Leader



Miss Quimby
Class Teacher

**Mrs Kirkland and Mrs Maguire will be our
Teaching Assistants in Year 6**

The School Day

- Gates will open at **8:40am** and close at **8:50am** for all children.
- Registers will be completed between **8:50am** and **9am**.
- Reception and Yr1 will enter during the side gate next to the school office.
- Yr2-Yr6 will enter through the main school gate behind the Co-Op.
- Learning will begin promptly when registration closes.
- Children are encouraged to be increasingly independent. They will be dropped off at the school gates in the morning, with the exception of Reception and Yr1.
- Children will be dismissed at the end of (morning gate) at the following times:
 - **Reception: 3:10pm**
 - **Yr1 – Yr6: 3:20pm**



Walking Home

- All children who are not being collected at the school gate, will need to return a permission slip
- Mobile phones



The Importance of Attendance

Regular school attendance is the key to enabling children and young people to maximise the educational opportunities available to them and become emotionally resilient, confident and competent adults who are able to realise their full potential and make a positive contribution to their community. Promoting excellent attendance is the responsibility of the whole school community.

| Attendance during the school year | Number of days absent | Number of weeks absent | Number of lessons missed |
|-----------------------------------|-----------------------|------------------------|--------------------------|
| 90% | 19 days | 4 weeks | 95 |
| 80% | 38 days | 8 weeks | 190 |
| 70% | 57 days | 11.5 weeks | 285 |

96% - 100%
WELL DONE - THIS IS
EXCELLENT!

YELLOW GROUP
90% - 95.9%
LOW ATTENDANCE

RED GROUP
Less than 90% PERSISTENT
ABSENCE PUPIL



Expectations at Barnfields

- Barnfields' Values of *Respect*, *Reflection*, *Resilience*, *Responsibility* and *Positivity* are at the heart of all of the children's actions.
- Every child looks smart in the correct school uniform and is proud to respect the Barnfields Badge.
- Excellent behaviour at all times will be the responsibility of the child; they will be asked to reflect on their choices and consequences may be incurred.
- There will be mutual respect from all members of our school community at all times.



Barnfields' Behaviour Policy: Principles



READY

Learning Behaviour

READY TO LISTEN,
READY TO LEARN

Listen to others
when they talk
to us

Stop when the
whistle is blown

Line up quietly and
sensibly when asked

Wait for an adult
instruction



RESPECTFUL

Attitude to Others

RESPECTFUL ATTITUDE,
RESPECTFUL WORDS

Demonstrate our STEPS
to good manners

Smile, be positive
and have a go!

Look after the equipment
on the playground

Treat others as we would
want to be treated

Be tolerant to others
and their opinions



SAFE

Behaviour

SAFE CHOICES,
SAFE ACTIONS

Use kind hands,
feet and words

Act in a calm and
considerate manner

Make good choices

Use equipment
correctly

Play games that are
appropriate for the
school playground



Barnfields' Behaviour Policy: Rewards



Daily: Verbal praise, celebration of work in class, stickers, sent to partner year group teacher/Phase Leader, raffle ticket reward (drawn at end of week)

Weekly: Phase Leader sticker, email to parents, Hot Chocolate Friday with Phase Leader, raffle ticket draw, Celebration Assembly (Well Done)

Half-termly: Postcards home from Headteacher, Reward Morning, a golden band to wear, Acorn Award Assembly

Termly: Squirrel Award Assembly, Reward Morning

Barnfields' Behaviour Policy: STEPS to Good Manners

We believe it is important that children learn through example so we actively teach the STEPS to good manners:

- Smile
- Thank you
- Excuse me
- Please
- Sorry



School Uniform

All pupils are expected to wear the uniform in full to school every day.

At Barnfields, children wear white collared shirts (long or short-sleeved), together with our **school tie**. A **red school cardigan** or V-necked jumper with the **school logo** must also be worn. This is accompanied by a **grey/red tartan skirt/pinafore dress** or black trousers (no leggings, jeans or combat style). **Black tights and black, white or grey socks** with sensible **black shoes or plain black boots** (no trainers or pumps) for the winter months must also be worn.

We encourage everyone to wear our main school uniform all year round. However, in the summer, children are able to wear black or grey shorts, or a red and white checked summer dress with white socks.

Please note that our PTFA, for a small donation, sell good quality second hand uniform.



PE Kit

PE kits are an essential part of physical education. They ensure children remain safe whilst being active and are key for personal hygiene. Children will be expected to wear a **red t-shirt with logo, black shorts or skirt and black or white socks**. A Barnfields hoody is optional. We encourage children to wear **inexpensive trainers; we do not stipulate a colour**. Additional warm clothing e.g. tracksuit can also be worn when necessary.

‘Let’s Dance’ is not part of the Barnfields PE Kit and should only be worn for after school clubs only.



Jewellery

The wearing of jewellery in school is not permitted with exception of one **pair of plain studded earrings** and **watches**. This is to ensure the health and safety of the children. Children are not allowed to wear any jewellery for PE and must be able to remove earrings by themselves as staff are not allowed to assist or tape them up. Therefore, if children are unable to remove their own earrings, please do not allow them to wear them on PE days.

Please remember that PE is a legal requirement in which children must participate. With this in mind, we suggest that children having ears pierced do so at the beginning of the summer holiday.



Hair Accessories








We expect hairstyles to be presentable and smart without being too extreme.

Long hair must be tied back for PE. During lesson time, we encourage hair to be tied back so not to hinder their learning.

Accessories, such as headbands, need to be sensible in appearance and size.

Lunch at Barnfields

| | | | | | | | |
|---|--|--|--|--|--|---|---|
| Menu available Wc 25/04 - 09/05 - 23/05 13/06 - 27/06 - 11/07 | | Barnfields Primary | | | | |  |
| Week 1 Menu starts Monday 25th April | Monday | Tuesday | Wednesday | Thursday | Friday |  Coming Soon Foodie Theme Days | |
| Main Course | Assorted Pizza Slices (V) | NEW Piri Piri Chicken | Spaghetti Beef Bolognese with Garlic Bread | Roast Turkey with Stuffing & Gravy | Battered Fish Fillet | Daily Mixed Salad Fresh Bread Deli Sandwiches Yoghurts Fresh Fruit Cheese & Biscuits | |
| Veggie Main | Veggie Nuggets (V) | NEW Piri Piri Quorn Fillets (V) | Veggie Spaghetti Bolognese with Garlic Bread (V) | Roasted Quorn Fillet with Stuffing & Gravy (V) | Omelette (V) | | |
| Vegetables | Peas Sweetcorn Spicy Wedges | Potato Bravas Sweetcorn | Mixed Vegetables | Roasted Potatoes Seasonal Vegetables | Chipped Potatoes Garden Peas Baked Beans | Speak to our AMAZING staff about our fantastic NEW dishes. | |
| Lighter Bites | Italian Herb Pasta Pots with Garlic Bread | Selection of Deli Sandwiches & Wraps | Jacket Potatoes with Various Fillings | Tomato Pasta with Garlic Bread | Selection of Deli Sandwiches & Wraps | | |
| Desserts | Selection of Chef's Desserts | Selection of Chef's Desserts | Selection of Chef's Desserts | Selection of Chef's Desserts | Selection of Chef's Desserts | Dietary & Allergies Please speak to a member of the catering staff if you have any special dietary or allergy requirements. | |
| Mid-Morning Break 10:20am until 11:00am | Toast Waffles Cheese on Toast Milkshakes Juice | Toast Waffles Cheese on Toast Milkshakes Juice | Toast Waffles Cheese on Toast Milkshakes Juice | Toast Waffles Cheese on Toast Milkshakes Juice | Toast Waffles Cheese on Toast Milkshakes Juice | | |
|  | Here at Barnfields Primary, where possible, our menu items are homemade from locally sourced, sustainable ingredients. | | | | |  |  |

Universal infant free school meals (UIFSM) provides funding for all government funded schools to offer free school meals to pupils in reception, year 1, and year 2.

Curriculum Intention

- Our curriculum is underpinned by six key drivers: *ambition, values, knowledge, retrieval, relevance* and *enquiry*. These determine the direction and development in the work that we do.
- We deliver a **knowledge-engaged curriculum** (we recognise that knowledge and skills are the two core components to learning).
- Our curriculum encompasses the statutory requirements of the National Curriculum.
- We offer a **broad and balanced curriculum** that values the discipline and importance of each subject (e.g. *true to discipline*).
- **Coherently planned and ambitious lesson sequences** ensure progression of knowledge and skills within the year and throughout the years.
- We understand that children learn and progress at different rates. We ensure that the curriculum is taught at the appropriate level and challenge for the stage of the child's development.

Curriculum Overviews

| ACADEMIC YEAR | AUTUMN | | SPRING | | SUMMER | |
|-----------------------|---|---|--|----------------|--|--------------|
| | Term 1 | Term 2 | Term 3 | Term 4 | Term 5 | Term 6 |
| School Value | Resilience | Respect | Positivity | Responsibility | Reflection | All 5 Values |
| Topic | World at War | | This is Our World | | Our Changing World | |
| Visits/Visitors | Condoover Outdoor Education Centre | | Online work with the Holocaust Society | | Warner Bros Studio tour 'The Making of Harry Potter' | |
| Learning Celebrations | World at War exhibition | | | | End of Year 6 production | |
| Local Links | Freda's Grave (Brocton Coppice) WW1 Training Camps (Rugeley/Brocton) | Stafford Cenotaph German Cemetery (Cannock Chase) | | | | |
| Reading (INC) | <p>The class text will be used to support the development of reading comprehension, along with the use of other supporting texts.</p> <p>Word Reading: Pupils should be taught to:</p> <ul style="list-style-type: none">• apply their growing knowledge of root words, prefixes and suffixes (morphology and etymology), as listed in English Appendix 1, both to read aloud and to understand the meaning of new words that they meet. <p>Comprehension: Pupils should be taught to:</p> <ul style="list-style-type: none">• maintain positive attitudes to reading and understanding of what they read by:<ul style="list-style-type: none">• continuing to read and discuss an increasingly wide range of fiction, poetry, plays, non-fiction and reference books or textbooks• reading books that are structured in different ways and reading for a range of purposes• increasing their familiarity with a wide range of books, including myths, legends and traditional stories, modern fiction, fiction from our literary heritage, and books from other cultures and traditions• recommending books that they have read to their peers, giving reasons for their choices• identifying and discussing themes and conventions in and across a wide range of writing• making comparisons within and across books• learning a wider range of poetry by heart | | | | | |

Curriculum Drivers: Values, Ambition, Relevance, Enquiry, Knowledge, Retrieval.

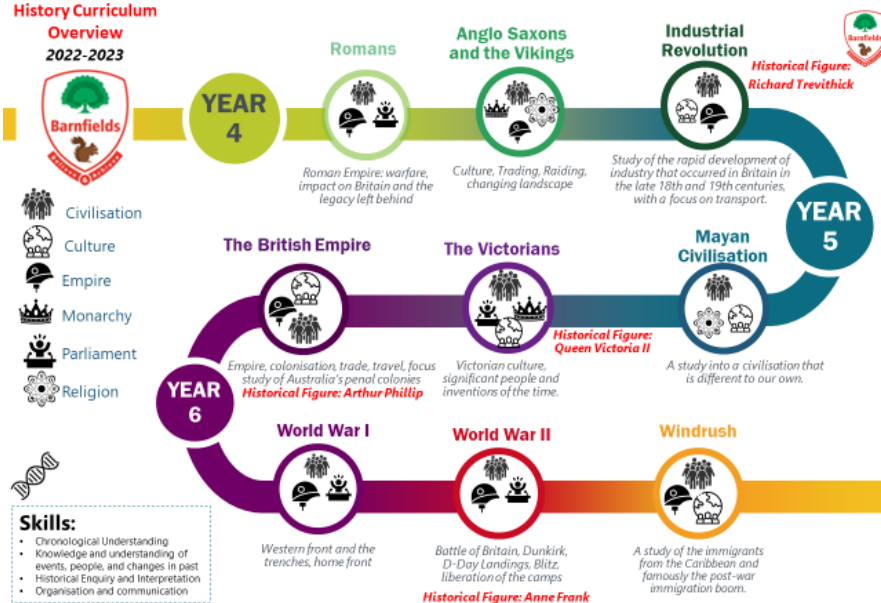
Geography

Autumn Term: Study of Europe

Spring Term: This is our World

Summer Term: Our Changing World

History Curriculum Overview 2022-2023



Homework

Children will be set Homework each Friday and will have until the following Friday to complete this.

Homework will include:

- 1 x Reading comprehension/Grammar exercise
- 1 x Maths consolidation based on their current learning
- Daily reading
- We still request children access TT Rockstars regularly as a quick recall of multiplication facts underpins much of the Year 6 Maths curriculum.

Expectations: Mathematics

| | Week 1 | Week 2 | Week 3 | Week 4 | Week 5 | Week 6 | Week 7 | Week 8 | Week 9 | Week 10 | Week 11 | Week 12 |
|-------------|-------------------------------|---------------------------|--|----------------------------|--|--|-------------------------------|---|-------------------------------|--------------------|---|---------|
| Autumn term | Number Place value VIEW | | Number Addition, subtraction, multiplication and division VIEW | | | | Number Fractions A VIEW | | Number Fractions B VIEW | | Measurement Converting units VIEW | |
| Spring term | Number Ratio VIEW | Number Algebra VIEW | | Number Decimals VIEW | | Number Fractions decimals and percentages VIEW | | Measurement Area, perimeter and volume VIEW | | Statistics VIEW | | |
| Summer term | Geometry Shape VIEW | | Geometry Position and direction VIEW | | Themed projects, consolidation and problem solving | | | | | | | |

English Expectations: Reading

- We expect children to read for at least 15 minutes every night. This is a book of their choice but should be suited to their reading ability (90% accuracy when reading).
- The book can be one borrowed from school or one from home
- Ideally, they will read aloud to an adult to allow you to check their fluency and also discuss the content and meaning of what they have read.
- In KS2, reading has a **whole class approach** and is taught for **half an hour four times per week**. This chosen text is used to develop children's fluency and competency with the text.

Across the week, a range of objectives are taught: **vocabulary, prediction, inference, summarising and comprehension questions**



English Expectations: Writing

Year 6 children are assessed by their teacher at the end of Year 6 and this judgement is submitted to the Government as part of their end of KS2 statutory assessments.

We make a judgement based on the Teacher Assessment Framework. These are the standards required to meet age related expectations:

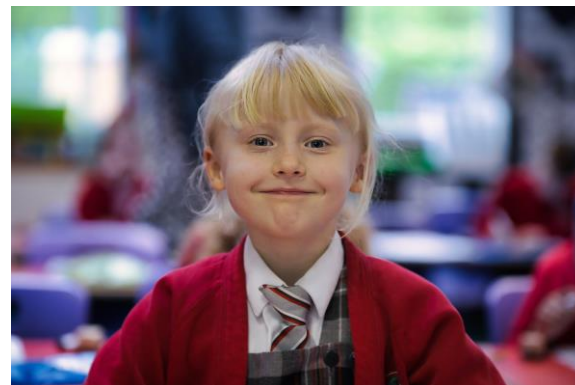
Working at the expected standard

The pupil can:

- write effectively for a range of purposes and audiences, selecting language that shows good awareness of the reader (e.g. the use of the first person in a diary; direct address in instructions and persuasive writing)
- in narratives, describe settings, characters and atmosphere
- integrate dialogue in narratives to convey character and advance the action
- select vocabulary and grammatical structures that reflect what the writing requires, doing this mostly appropriately (e.g. using contracted forms in dialogues in narrative; using passive verbs to affect how information is presented; using modal verbs to suggest degrees of possibility)
- use a range of devices to build cohesion (e.g. conjunctions, adverbials of time and place, pronouns, synonyms) within and across paragraphs
- use verb tenses consistently and correctly throughout their writing
- use the range of punctuation taught at key stage 2 mostly correctly¹ (e.g. inverted commas and other punctuation to indicate direct speech)
- spell correctly most words from the year 5 / year 6 spelling list,^{*} and use a dictionary to check the spelling of uncommon or more ambitious vocabulary
- maintain legibility in joined handwriting when writing at speed.²

Reporting to Parents

As in previous years, a report will be sent out to parents at the end of each term, enabling you to track your child's attainment and progress throughout the year.



| | Autumn 1 | Autumn 2 | Spring 1 | Spring 2 | Summer 1 | Summer 2 |
|-----------|----------|----------|----------|----------|----------|----------|
| Expected | 5S+ | 6B | 6B+ | 6W | 6W+ | 6S |
| Exceeding | 6B | 6B+ | 6W | 6W+ | 6S | 6S+ |

| Progress | Autumn 1 | Autumn 2 | Spring 1 | Spring 2 | Summer 1 | Summer2 |
|----------|----------|----------|----------|----------|----------|---------|
| Expected | 1 step | 2 steps | 3 steps | 4 steps | 5 steps | 6 steps |

Parental Support

We strongly advocate a strong working relationship between Home and School and we are fortunate to have very supportive parents at Barnfields.

Throughout the year you can support your child by:

- Encouraging them to complete homework and supporting them with this if necessary
- Listening to them read on a regular basis
- Encouraging them to grow in independence ready for High School e.g. packing their own school bags, remembering which day they do PE, encouraging them to resolve fall-outs independently where possible
- Promote good attendance and promote punctuality enabling each child to access all of the school day



Bikeability : 14th and 15th September 2023

Condover Parents' Meeting: 11th October 2023

Y6 residential to Condover: 6th – 10th November 2023

SATs Parents' Meeting: 17th January 2024

End of Key Stage 2 assessments (SATS) : week commencing
13th May 2024

Warner Bros. Studio Tour: May/June 2024

Final data submission end of June 2024

Keeping in Touch

Email: office@barnfields.staffs.sch.uk

Mr Ball: headteacher@barnfields.staffs.sch.uk

Mr Locke: tom.locke@barnfields.staffs.sch.uk

Mrs Davies (SENCO): senco_BP@barnfields.staffs.sch.uk



We also publish Barnfields' Bulletin every two weeks which contains important information, such as any upcoming events.

We also have a very active Twitter account.

Follow us [@BarnfieldsPS](https://twitter.com/BarnfieldsPS)

