

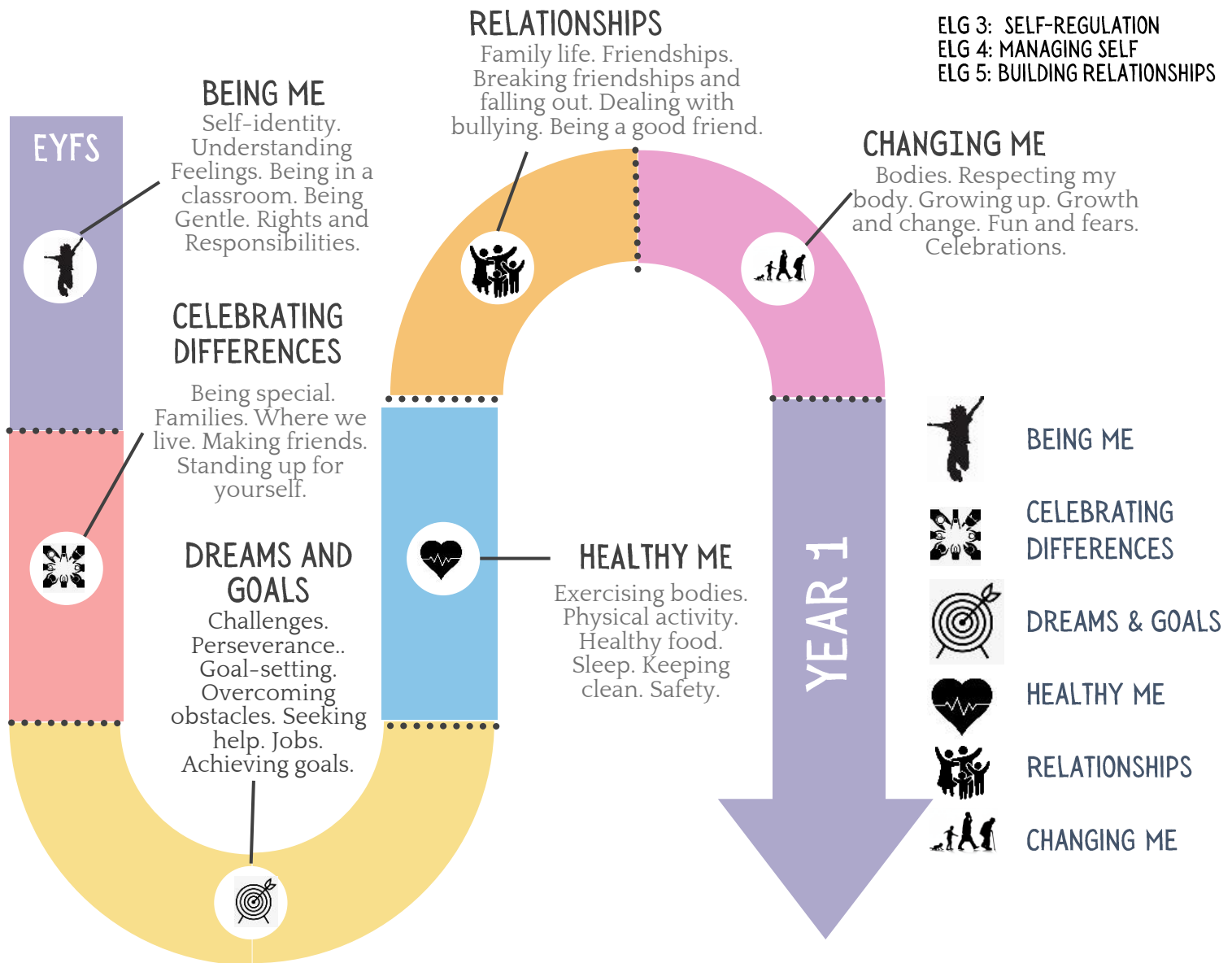


THE FOUNDATIONS OF PSHE CURRICULUM IN EYFS: CURRICULUM PROGRESSION

Children's personal, social and emotional development (PSED) is crucial for children to lead healthy and happy lives and is fundamental to their cognitive development. Underpinning their personal development are the important attachments that shape their social world. Strong, warm and supportive relationships with adults enable children to learn how to understand their own feelings and those of others. Children should be supported to manage emotions, develop a positive sense of self, set themselves simple goals, have confidence in their own abilities, to persist and wait for what they want and direct attention as necessary. Through adult modelling and guidance, they will learn how to look after their bodies, including healthy eating, and manage personal needs independently. Through supported interaction with other children, they learn how to make good friendships, co-operate and resolve conflicts peacefully. These attributes will provide a secure platform from which children can achieve at school and in later life.

KEY AREAS OF LEARNING:

- BEING ME
- CELEBRATING DIFFERENCES
- DREAMS & GOALS
- HEALTHY ME
- RELATIONSHIPS
- CHANGING ME



ELG 3: SELF-REGULATION
ELG 4: MANAGING SELF
ELG 5: BUILDING RELATIONSHIPS